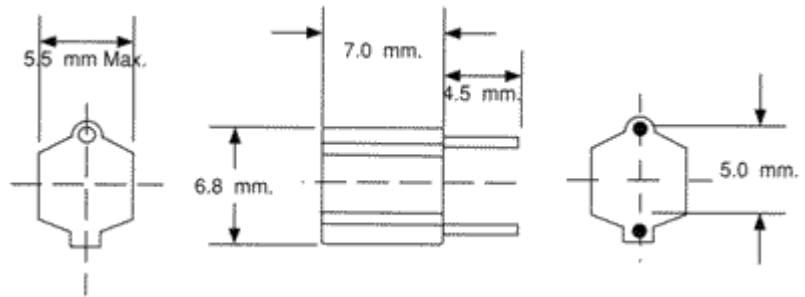


7BS Series



**Discontinued by TOKO in 1999.
Available until stocks are depleted.**

Features

- A general range of radial fixed inductors.
- Tolerance code J = $\pm 5\%$
- Tolerance code K = $\pm 10\%$
- Lowest tolerance will be supplied as standard.
- Temp Coefficient 400ppm/ $^{\circ}\text{C}$ Max.
- Operating Temperature -10/+60 $^{\circ}\text{C}$

TOKO 7BS FIXED INDUCTORS

TOKO Ref	Inductance	Q min	DC res (ohm) max	Q Test Freq	SRF (MHz)	BEC Ref
283MS-R10(K)	0.1uH	25	0.12	25.2		437701
283MS-R12(K)	0.12uH	25	0.15	25.2		437712
283MS-R15(K)	0.15uH	25	0.19	25.2		437715
283MS-R18(K)	0.18uH	25	0.22	25.2		437718
283MS-R22(K)	0.22uH	25	0.24	25.2		437722
283MS-R27(K)	0.27uH	25	0.26	25.2		437727
283MS-R33(K)	0.33uH	25	0.29	25.2		437733
283MS-R39(K)	0.39uH	25	0.31	25.2		437739
283MS-R47(K)	0.47uH	25	0.36	25.2		437747
283MS-R56(K)	0.56uH	25	0.39	25.2		437756
283MS-R68(K)	0.68uH	25	0.44	25.2		437768
283MS-R82(K)	0.82uH	25	0.47	25.2		437782
283AS-1R0(K)	1.0uH	40	0.25	7.96	125	437001
283AS-1R2(K)	1.2uH	40	0.3	7.96		437012
283AS-1R5(K)	1.5uH	40	0.32	7.96	113	437015
283AS-1R8(K)	1.8uH	40	0.35	7.96	100	437018
283AS-2R2(K)	2.2uH	40	0.38	7.96	85	437022
283AS-2R7(K)	2.7uH	40	0.45	7.96	75	437027

283AS-3R3(K)	3.3uH	40	0.48	7.96	72	437033
283AS-3R9(K)	3.9uH	40	0.55	7.96	60	437039
283AS-4R7(K)	4.7uH	40	0.57	7.96	56	437047
283AS-5R6(K)	5.6uH	40	0.64	7.96	45	437056
283AS-6R8(K)	6.8uH	40	0.72	7.96	35	437068
283AS-8R2(K)	8.2uH	40	0.75	7.96	22.5	437082
283AS-100(J)	10uH	40	0.86	7.96	20.5	437100
283AS-120(J)	12uH	40	0.96	2.52	16.6	437120
283AS-150(J)	15uH	40	1.06	2.52	12.8	437150
283AS-180(J)	18uH	40	1.2	2.52	10	437180
283AS-220(J)	22uH	40	1.3	2.52	8.7	437220
283AS-270(J)	27uH	40	1.46	2.52	8.2	437270
283AS-330(J)	33uH	40	1.6	2.52	8	437330
283AS-390(J)	39uH	40	1.74	2.52	6.5	437390
283AS-470(J)	47uH	40	2	2.52	6	437470
283AS-560(J)	56uH	40	2.1	2.52	6	437560
283AS-680(J)	68uH	40	2.4	2.52	5.3	437680
283AS-820(J)	82uH	40	2.6	2.52	4.7	437820
283AS-101(J)	100uH	40	3	2.52	4.5	437101
283AS-121(J)	120uH	40	3.6	796KHz	3.5	437121
283AS-151(J)	150uH	40	4.35	796KHz	3.3	437151
283AS-181(J)	180uH	40	4.65	796KHz	3.1	437181
283AS-221(J)	220uH	40	5.25	796KHz	2.8	437221
283AS-271(J)	270uH	40	6.1	796KHz	2.6	437271
283AS-331(J)	330uH	40	6.8	796KHz	2.4	437331
283AS-391(J)	390uH	40	7.5	796KHz	2.2	437391
283AS-471(J)	470uH	40	8.5	796KHz	2	437471
283AS-561(J)	560uH	40	11.2	796KHz	1.9	437561
283AS-681(J)	680uH	40	12.7	796KHz	1.8	437681
283AS-821(J)	820uH	40	14.3	796KHz	1.7	437821
283AS-102(J)	1000uH	40	16.9	796KHz	1.5	437102